

KENMORE HOMES AT



WESTWOOD  
VILLAGE

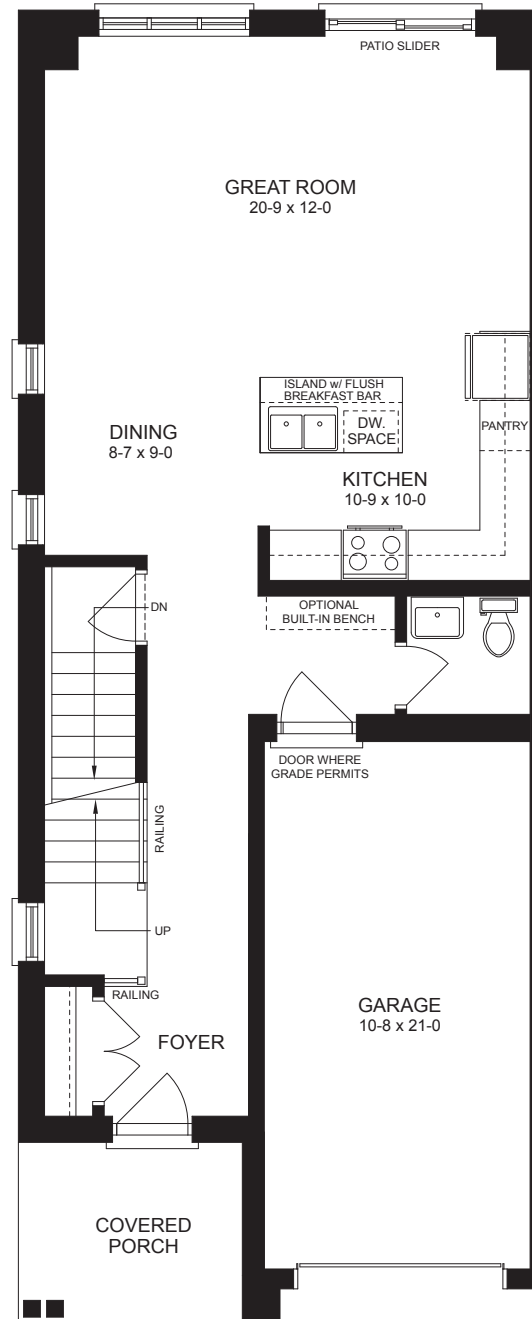


**MERLIN**

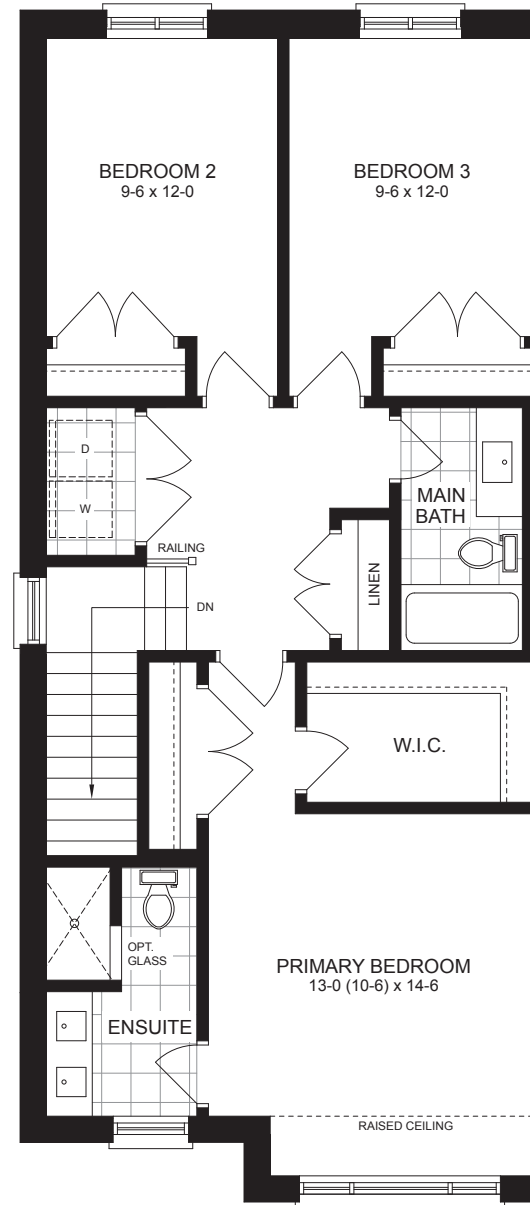
**END UNIT | 1693 SQ.FT.**

Rendering is artist's concept of the completed building and is subject to change. Illustration may show optional features which may not be included in the base price. Landscape areas and plantings are concepts only and may vary from finished landscape. See sales representatives for more information. E. & O. E.

KENMORE [WESTWOOD.CA](https://www.westwood.ca)



**Main Floor**



**Second Floor**



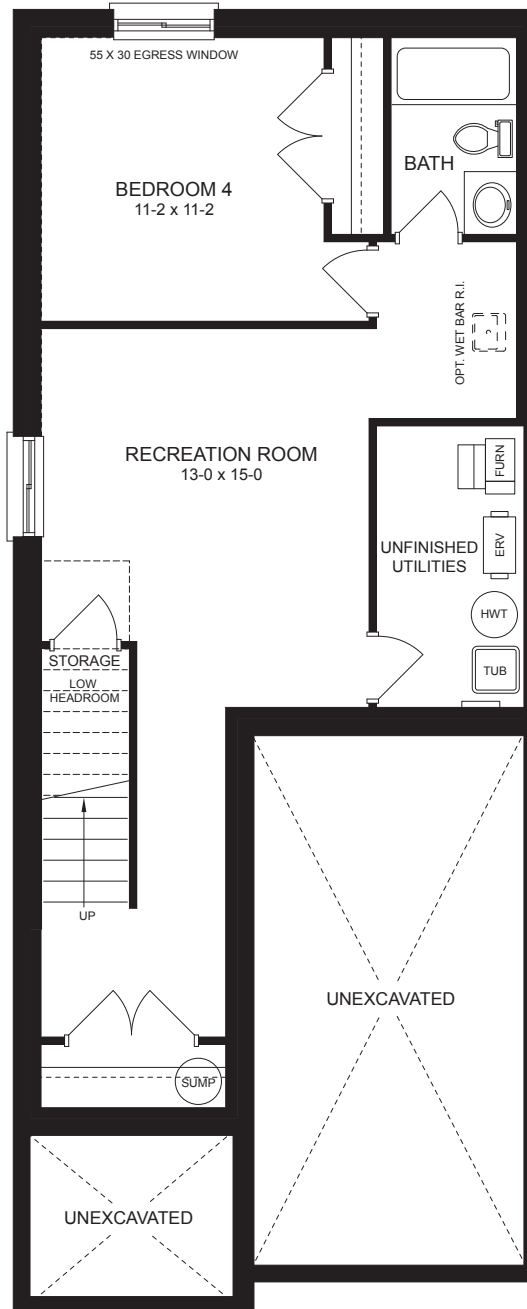
**MERLIN**  
**1693 SQ.FT.**

3 Bed | 2.5 Bath

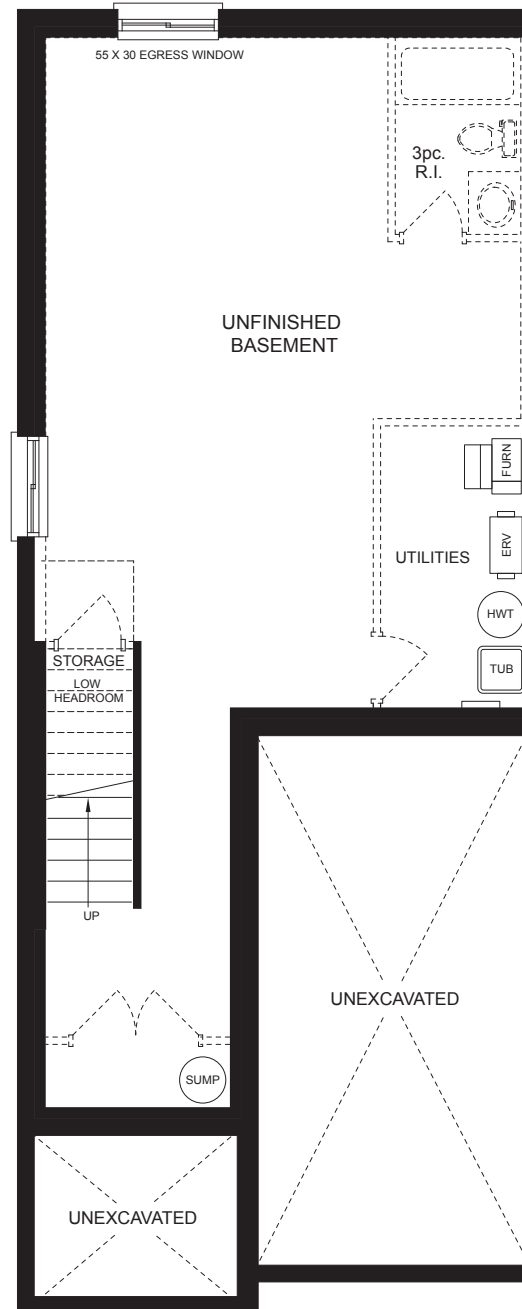


**END UNIT**

Floorplan dimensions are approximate. Actual usable floorspace may vary from stated floor area. Square footage includes open spaces. Pricing, plans, dimensions, elevations, availability and specifications are subject to change without notice and are dependent on architect final approval, final grading, survey City zoning and Bylaws. Plans may be reversed depending on lot selected. Illustrations are artists' concept only and may show optional features not included in base price. See sales representative for more information. E. & O. E.



**Finished Basement** | +644 sq.ft.



**Standard Basement**



**MERLIN**  
**1693 SQ.FT.**

3 Bed | 2.5 Bath



**END UNIT**

Floorplan dimensions are approximate. Actual usable floorspace may vary from stated floor area. Square footage includes open spaces. Pricing, plans, dimensions, elevations, availability and specifications are subject to change without notice and are dependent on architect final approval, final grading, survey City zoning and Bylaws. Plans may be reversed depending on lot selected. Illustrations are artists' concept only and may show optional features not included in base price. See sales representative for more information. E. & O. E.

**KENMOREWESTWOOD.CA**